

# HYDRAULIC DISC BRAKES LB, LBS, LBV - Wet



## APPLICATION

- » Heavy Duty machinery
- » Wheel drives
- » Material handling
- » Mining
- » Agricultural machines
- » Conveyors
- » Door openers and swing drives etc.



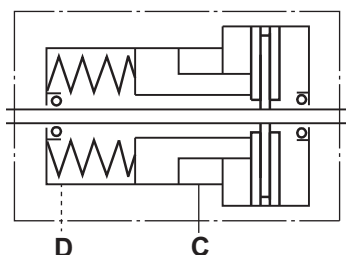
## GENERAL

<b>Fluid type</b>	Mineral based- HLP(DIN 51524) or HM(ISO 6743/4)
<b>Temperature range, °F [°C]</b>	-40÷284 [-430÷140]
<b>Viscosity range, SUS [mm<sup>2</sup>/s]</b>	98÷347 [20÷75]
<b>Filtration</b>	ISO code 20/16 (nominal filtration of 25 microns)
<b>Maintenance</b>	Changed after the first 50-100 h, then after every 500-1500 h.

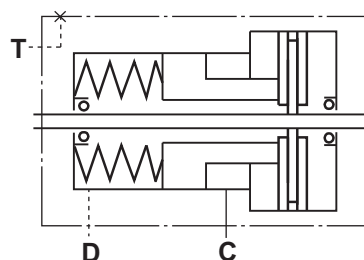
## CONTENTS

Hydraulic Disc Brake for MLHP, MLHR and MLHS Motors type LB/288 ...	4÷5
Hydraulic Disc Brake for MLHSS type LBS/289 .....	6
Hydraulic Disc Brake for MLHSV type LBV/289 .....	7
Hydraulic Disc Brake for MLHSS type LBS/290 .....	8
Hydraulic Disc Brake for MLHSV type LBV/290 .....	9
Output Shafts Extensions for LBS(LBV)/289, 290 .....	10
Load curve for LBS(LBV)/289, 290 .....	10
Order code for LB.../288... .....	11
Hydraulic Disc Brake for MLHTS type LBS/314 .....	12
Hydraulic Disc Brake for MLHTS type LBS/315 .....	13
Load curve for LBS(LBV)/314, 315 .....	13
Hydraulic Disc Brake for MLHTV type LBV/314, 315 .....	14
Output Shafts Extensions for LBS(LBV)/314, 315 .....	15
Internal Spline Data .....	15
Order Code .....	16

### LB, LBS



### LBV

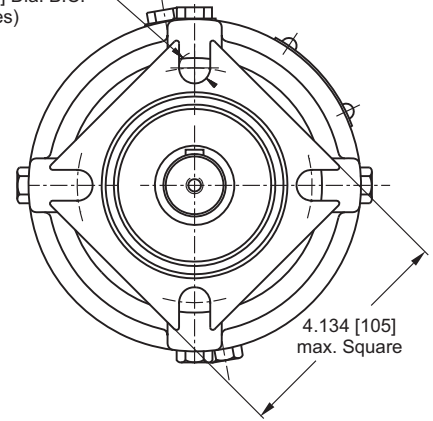


**HYDRAULIC DISC BRAKE TYPE LB../288...**  
**FOR FLANGE ATTACHMENT TO MLHP, MLHR AND MLHS HYDRAULIC MOTORS**

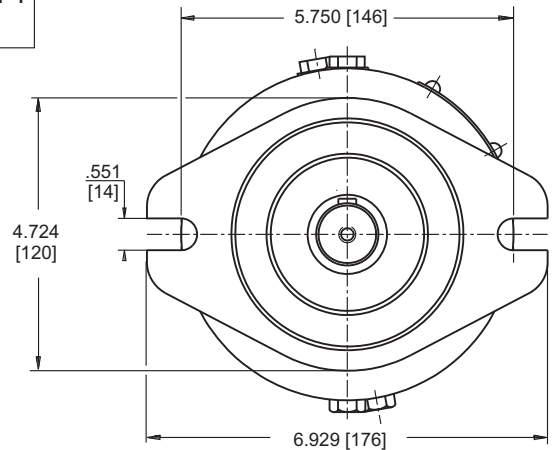
**OUTPUT FACE**

**A SAE A Mount**

.551 [14] Dia. Mounting Hole  
on 4.188 [106,4] Dia. B.C.  
(4 places)



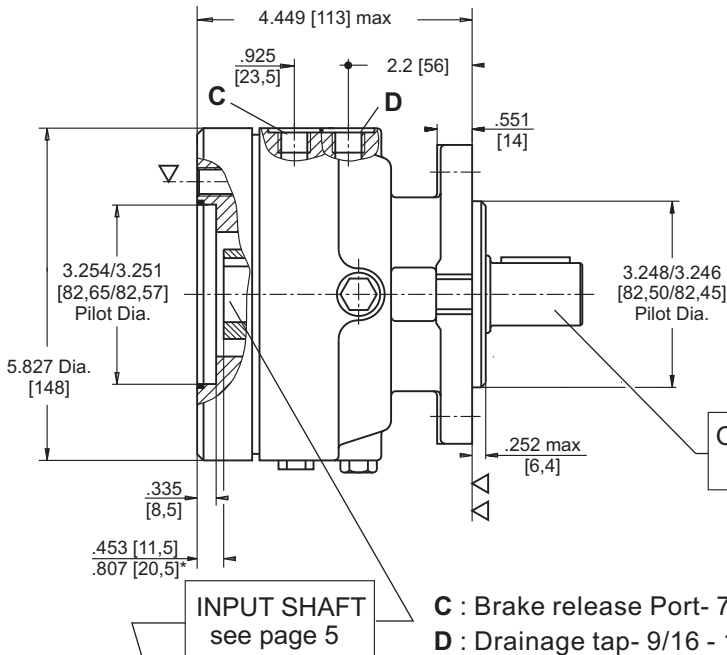
**B SAE B Mount**



▽ - Place for attachment  
(tightening torque for screw 1/2-13UNC, 1 1/4 in [31,8 mm] long  
ANSI B 18.3-76: 620 lb-in [7 daNm])

▽▽ - Place for attachment

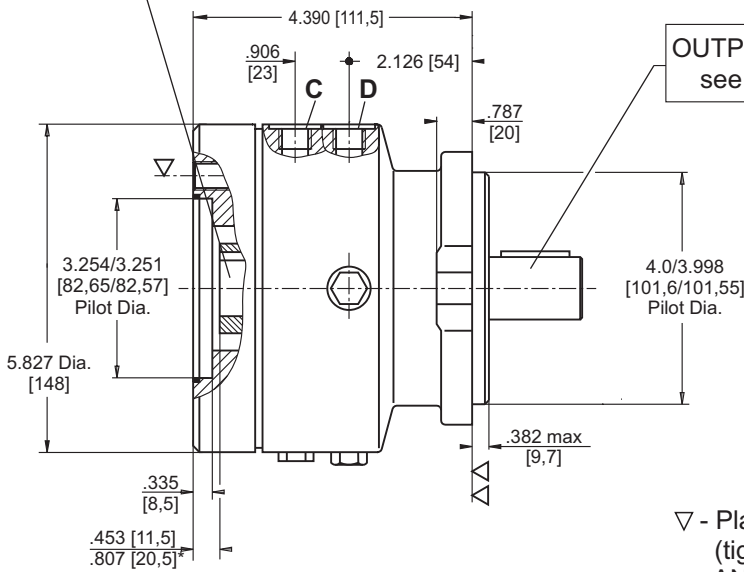
\* - for Input Shaft Hole Version "S"



**INPUT SHAFT**  
see page 5

**C** : Brake release Port- 7/16 - 20UNF, deep .47 [12]  
**D** : Drainage tap- 9/16 - 18UNF, deep .51 [13]

**OUTPUT SHAFT**  
see page 5



**OUTPUT SHAFT**  
see page 5

**SPECIFICATION DATA**

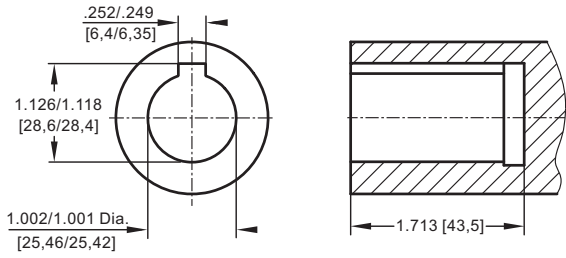
Description LB../288...	7	14	21	32	43	63
** Min. Static Torque, lb-in [daNm]	531-708 [6-8]	1150-1327 [13-15]	1770-1947 [20-22]	2743-3009 [31-34]	3628-3982 [41-45]	5399-5665 [61-64]
Opening Pressure, PSI [bar]	min 58-73 [4-5]	116-130 [8-9]	174-188 [12-13]	260-290 [18-20]	348-377 [24-26]	550-565 [38-39]
	max	4350 [300]				
Min. oil quantity for brake releasing, in <sup>3</sup> [cm <sup>3</sup> ]	.427 - .488 [7 - 8]					
Oil volume, in <sup>3</sup> [cm <sup>3</sup> ]	3.5 - 7.35 [50 - 120]					
Max. Pressure in drain space, PSI [bar]	7.25 [0,5]					
Weight lb [kg]	19.8 [9]					

\*\*Static torque is obtained at working pressure - 0 PSI [0 bar].

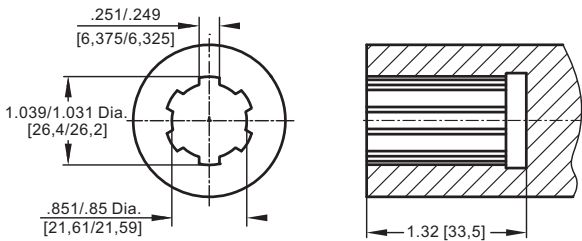
**INPUT SHAFT HOLES for LB.../288**

**OUTPUT SHAFT EXTENSIONS for LB.../288**

**C**



**G**

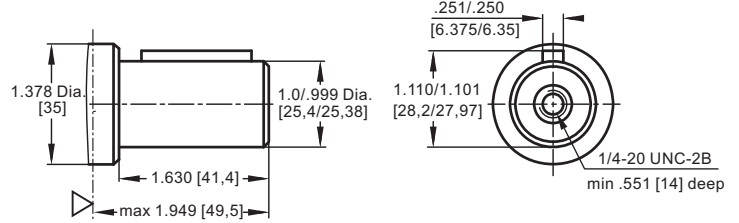


**S**



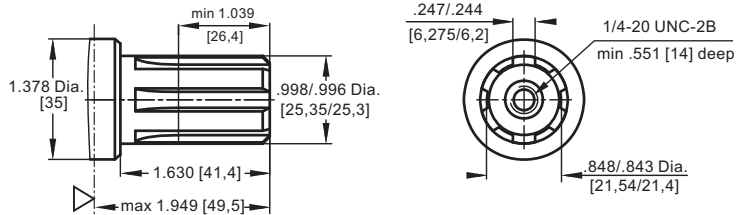
**C**

1"[25,4] straight, Parallel key 1/4"x1/4"x1/4" BS 46  
Max. Torque 3900 lb-in [44 daNm]



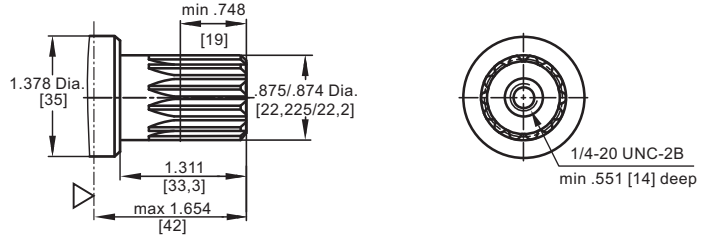
**G**

1"[25,4], SAE 6B Splined  
Max. Torque 3900 lb-in [44 daNm]

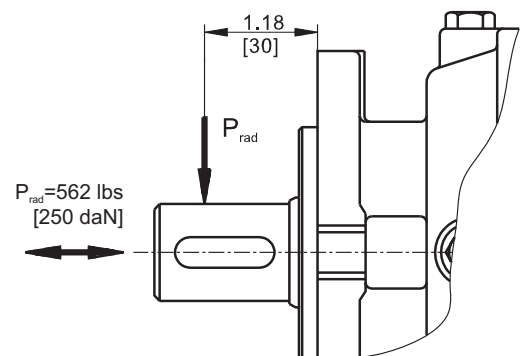
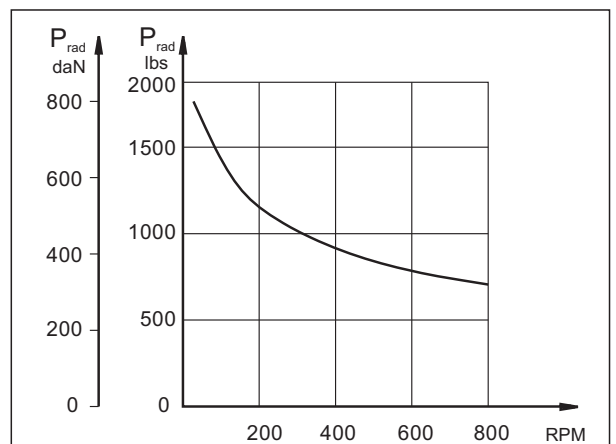


**S**

13T Splined 7/8"[22,22], ANS B92.1-1976  
Max. Torque 3200 lb-in [36 daNm]



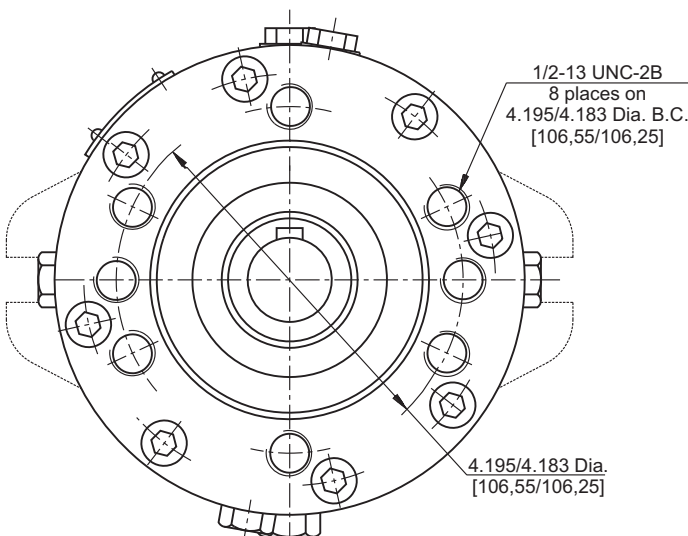
**LOAD CURVE**



▽ - Disc Brake Mounting Surface



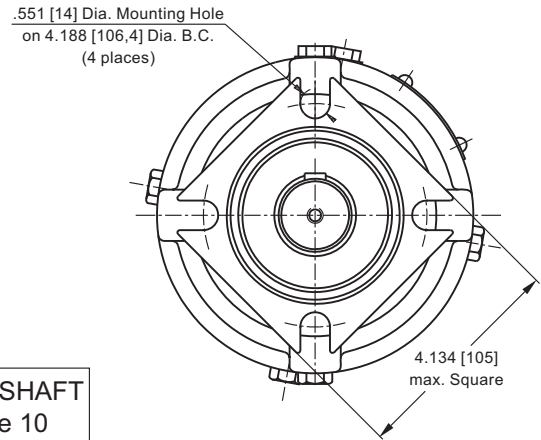
**INPUT FACE**



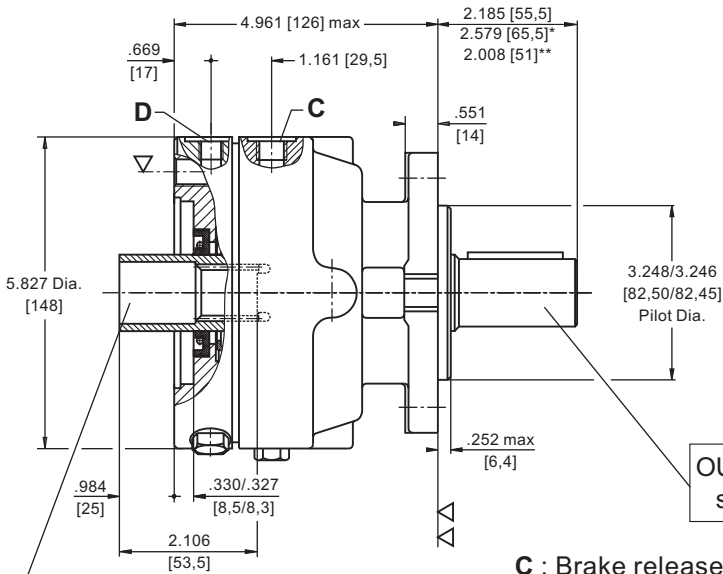
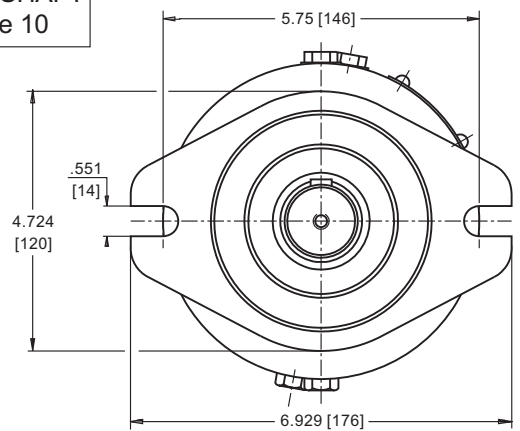
**HYDRAULIC DISC BRAKE TYPE LBS.../289...  
FOR FLANGE ATTACHMENT TO MLHSS HYDRAULIC MOTORS**

**OUTPUT FACE**

**A SAE A Mount**



**B SAE B Mount**

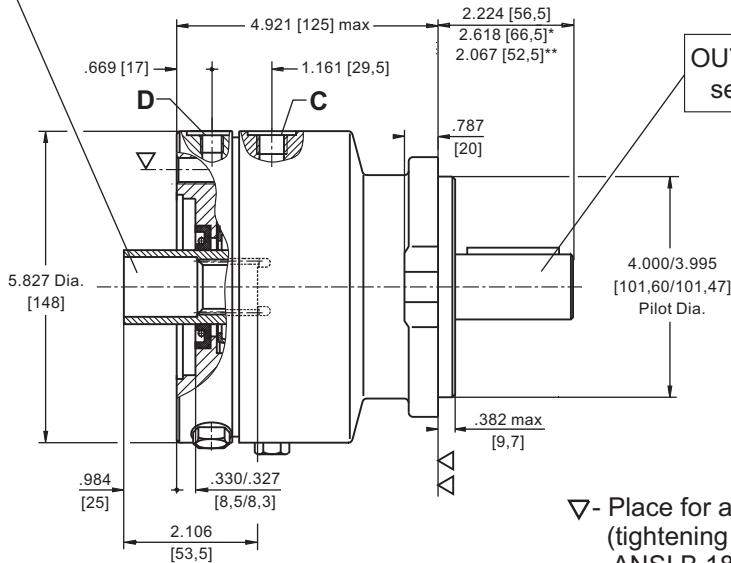


**OUTPUT SHAFT**  
see page 10

- C** : Brake release Port- 7/16 - 20UNF, .47 [12] depth
- D** : Drainage tap- 9/16 - 18UNF, .51 [13] depth
- \* - For Output Shaft Version T
- \*\* - For Output Shaft Version S



**INPUT SHAFT**  
see page 15



**OUTPUT SHAFT**  
see page 10

▽ - Place for attachment  
(tightening torque for screws 4x 1/2-13UNC, 1 1/4 in [31,8 mm] long  
ANSI B 18.3-76: 620 lb-in [7 daNm])

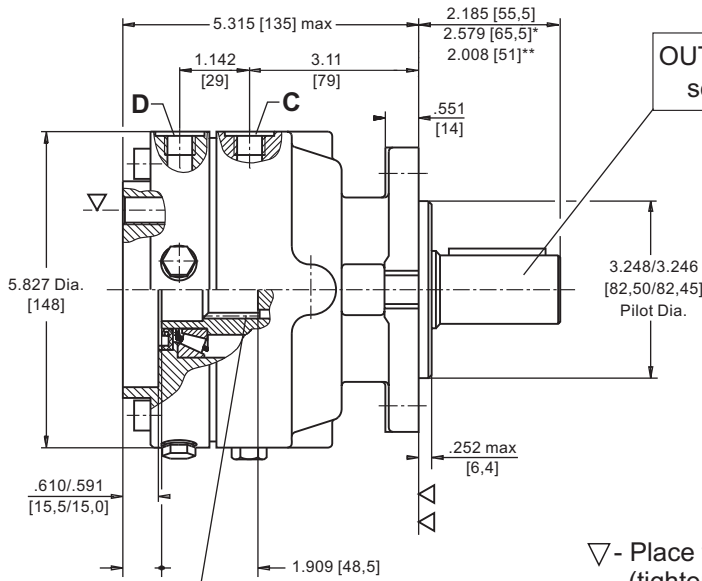
▽▽ - Place for attachment

**SPECIFICATION DATA**

Description LBS(LBV)..../289(290)	21	32	43	63
* Min. Static Torque lb-in [daNm]	1770-1947[20-22]	2743-3009[31-34]	3628-3982[41-45]	5399-5665[61-64]
Opening Pressure min	174-188 [12-13]	260-290 [18-20]	348-377 [24-26]	550-565 [38-39]
PSI [bar] max	4350 [300]			
Min. oil quantity for brake releasing in <sup>3</sup> [cm <sup>3</sup> ]	.427- .488 [7- 8]			
Oil volume in <sup>3</sup> [cm <sup>3</sup> ]	3.05-7.32 [50-120]			
Max. Pressure in PSI in drain space [bar]	72[5]			
Weight for .../289 lb [kg] for .../290	22 [10] 24.2 [11]			

\*Static torque is obtained at working pressure - 0 PSI [0 bar].

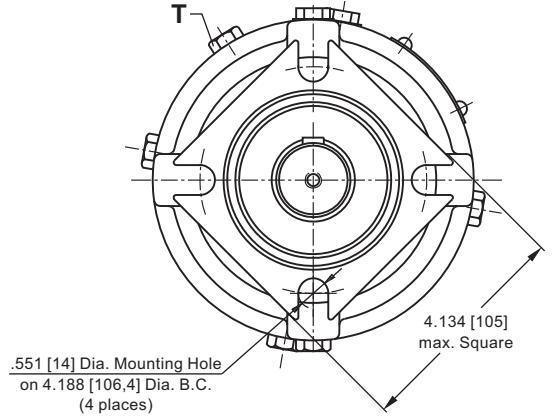
**HYDRAULIC DISC BRAKE TYPE LBV.../289...  
FOR FLANGE ATTACHMENT TO MLHSV HYDRAULIC MOTORS**



OUTPUT SHAFT  
see page 10

**OUTPUT FACE**

**A SAE A Mount**



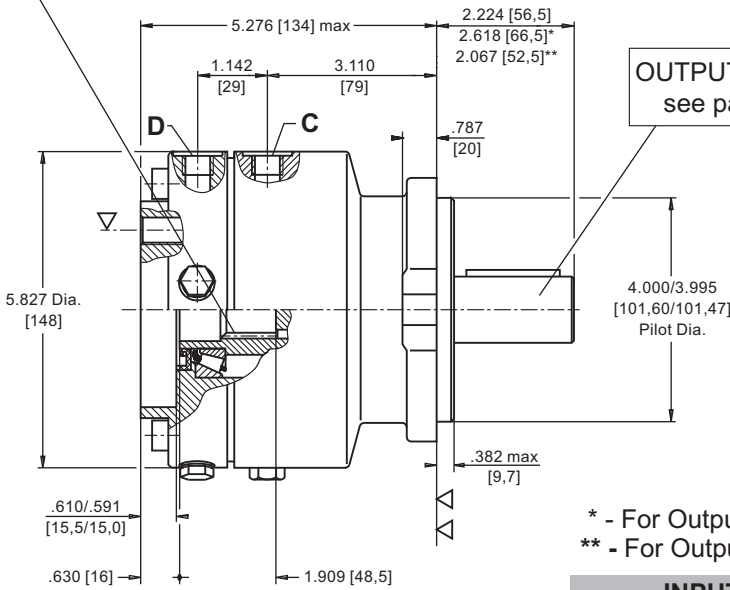
- ▽ - Place for attachment (tightening torque for screws 4xM10 DIN 912 - 530 lb-in [6 daNm])
- ▽▽ - Place for attachment

**C** : Brake release Port- 7/16 - 20UNF, .47 [12] depth

**D** : Drain plug for the Brake - 9/16-18UNF, .51 [13] depth

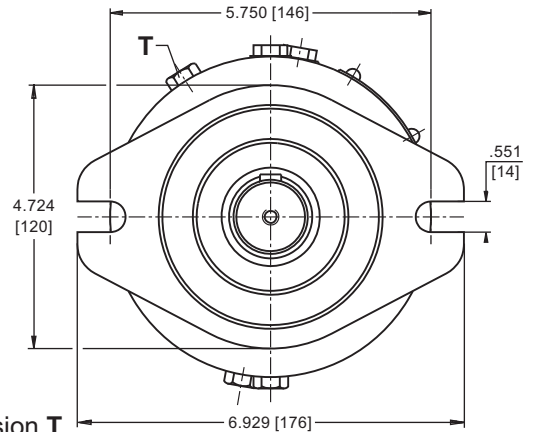
**T** : Drain plug for the Motor - 9/16-18UNF, .51 [13] depth

INPUT SHAFT  
see page 15



OUTPUT SHAFT  
see page 10

**B SAE B Mount**

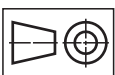
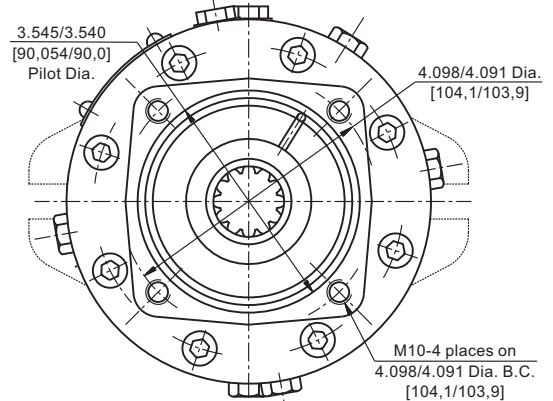
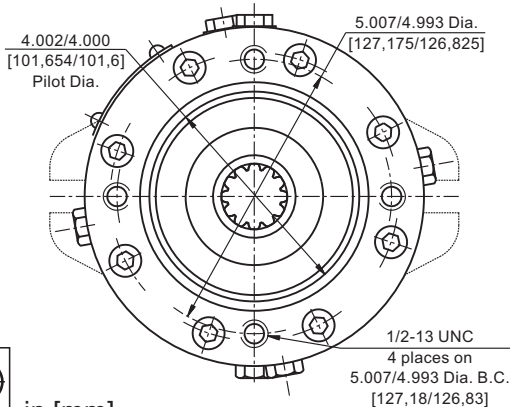


- \* - For Output Shaft Version T
- \*\* - For Output Shaft Version S

**TYPE LBS.../...**

**INPUT FACE  
For Versions 289 and 290**

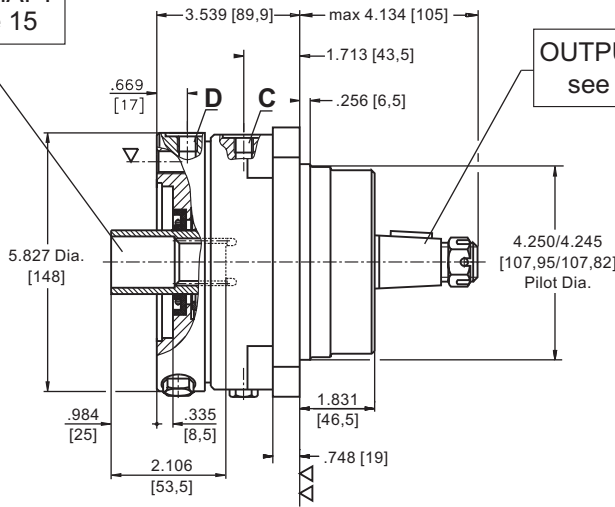
**TYPE LBV.../...**



in [mm]

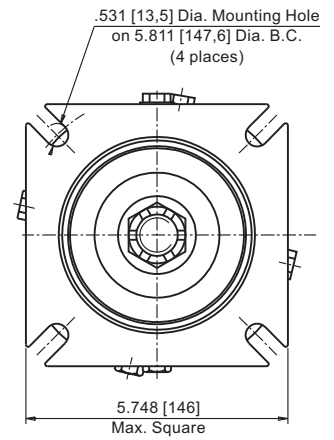
**HYDRAULIC DISC BRAKE TYPE LBS.../290...  
FOR FLANGE ATTACHMENT TO MLHSS HYDRAULIC MOTORS**

INPUT SHAFT  
see page 15

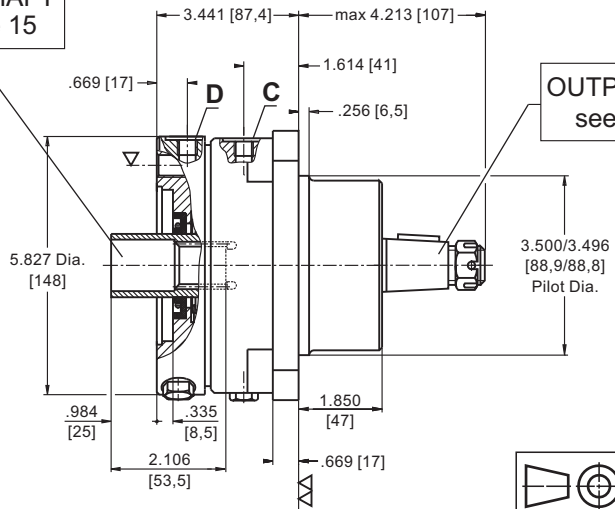


**OUTPUT FACE**

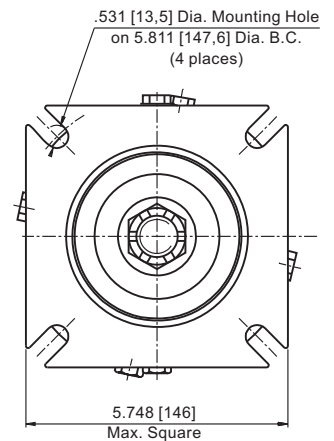
**E** Wheel Mount



INPUT SHAFT  
see page 15

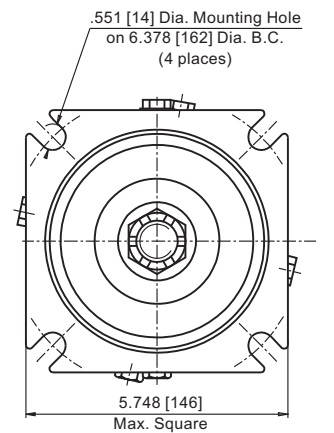
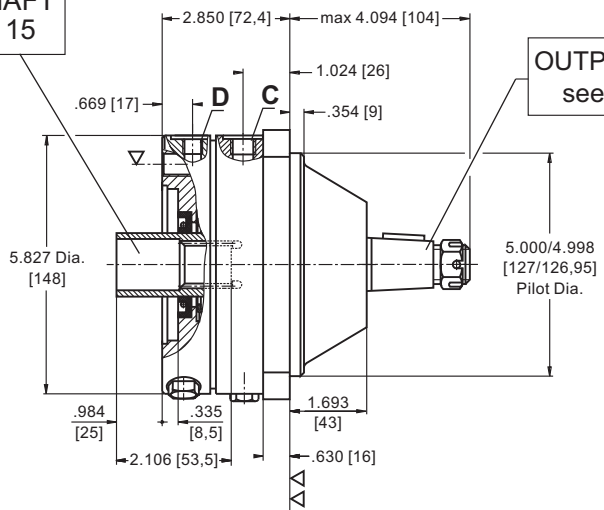


**R** Wheel Mount



**W** SAE C Wheel Mount

INPUT SHAFT  
see page 15



**C** : Brake release Port - 7/16 - 20UNF, .47 [12] depth

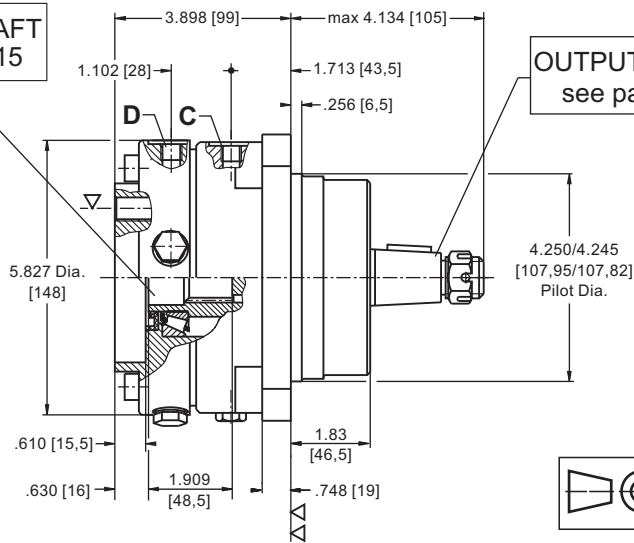
**D** : Drain plug for the Brake - 9/16 - 18UNF, .51 [13] depth

**T** : Drain plug for the Motor - 9/16 - 18UNF, .51 [13] depth

▽ - Place for attachment  
(tightening torque for screws 4x 1/2-13UNC  
1 1/4 in [31,8 mm] long  
ANSI B 18.3-76: 620 lb-in [7 daNm])  
▽▽ - Place for attachment

**HYDRAULIC DISC BRAKE TYPE LBV.../290...  
FOR FLANGE ATTACHMENT TO MLHSV HYDRAULIC MOTORS**

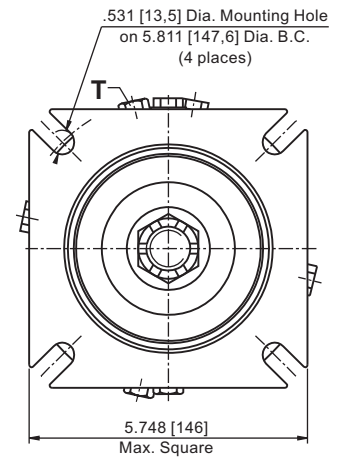
INPUT SHAFT  
see page 15



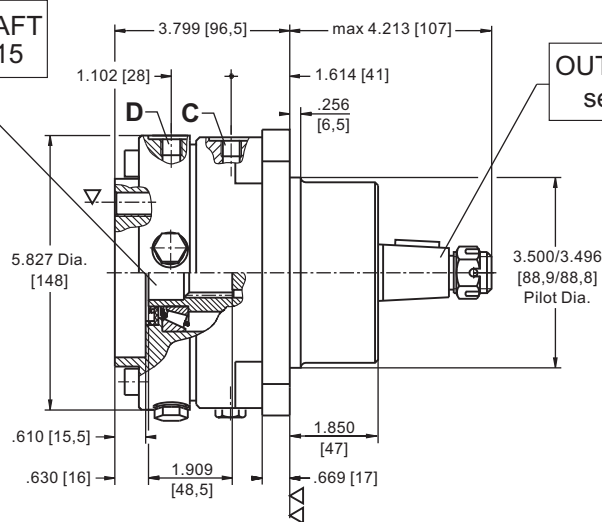
OUTPUT SHAFT  
see page 10

**OUTPUT FACE**

**E Wheel Mount**

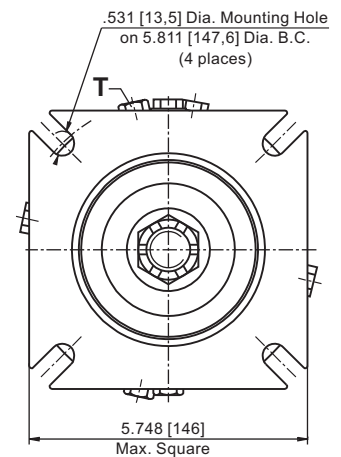


INPUT SHAFT  
see page 15

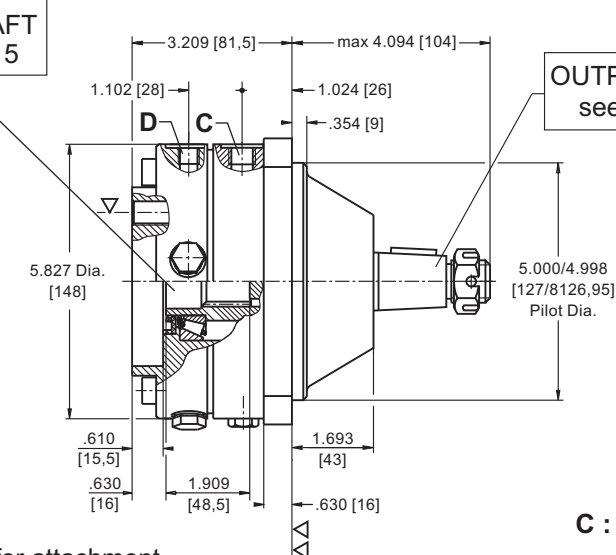


OUTPUT SHAFT  
see page 10

**R Wheel Mount**

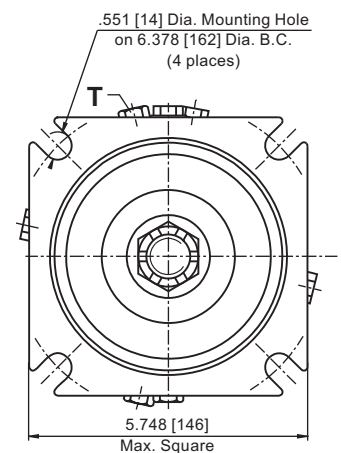


INPUT SHAFT  
see page 15



OUTPUT SHAFT  
see page 10

**W SAE C Wheel Mount**



**C** : Brake release Port - 7/16 - 20UNF, .47 [12] depth

**D** : Drain plug for the Brake - 9/16 - 18UNF, .51 [13] depth

**T** : Drain plug for the Motor - 9/16 - 18UNF, .51 [13] depth

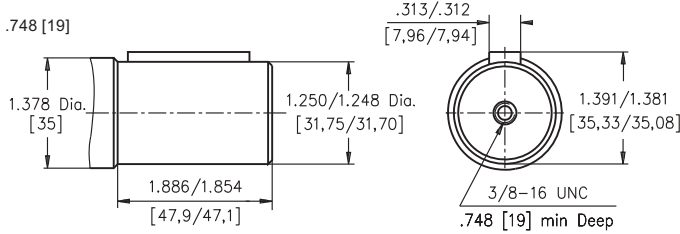
▽ - Place for attachment  
(tightening torque for screws  
4xM10 DIN 912 - 440 lb-in [5 daNm])

▽▽ - Place for attachment

**OUTPUT SHAFT EXTENSIONS for LB.../289, 290**

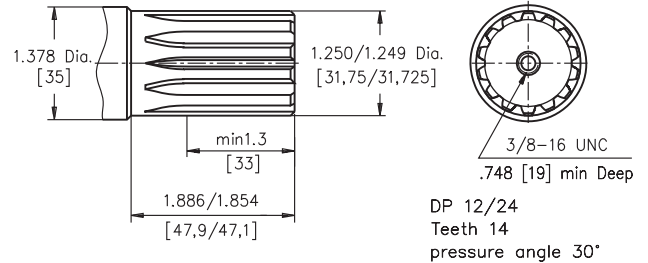
**C**

1 1/4" [31,75] straight, Parallel key 5/16" x 5/16" x 1 1/4" BS 46  
Max. Torque 6815 lb-in [77 daNm]



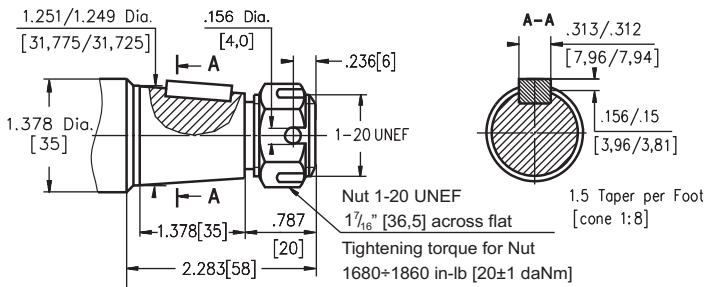
**G**

14T Splined, 1 1/4" [31,75], ANS B92.1-1976  
Max. Torque 6815 lb-in [77 daNm]



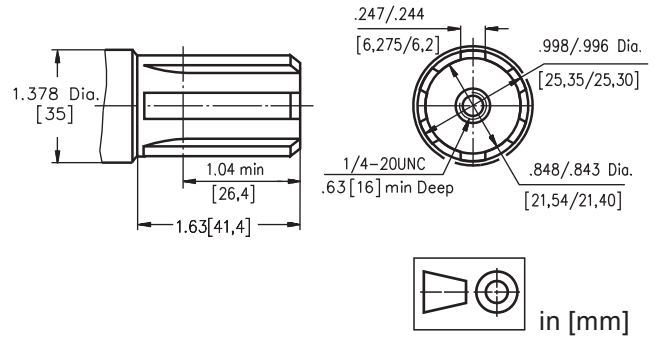
**T**

1 1/4" [31,75], SAE J501 Tapered  
Parallel key 5/16" x 5/16" x 1" BS46  
Max. Torque 6815 lb-in [77 daNm]



**S**

1" [25,4], SAE 6B Splined  
Max. Torque 3900 lb-in [44 daNm]

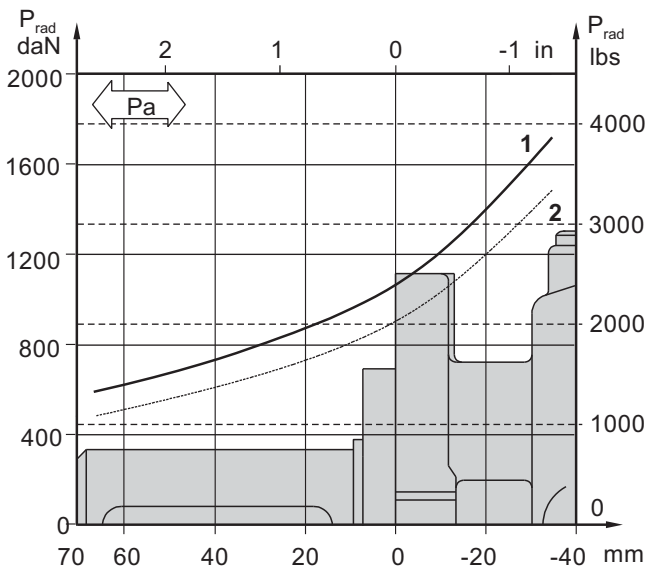


**LOAD CURVE**

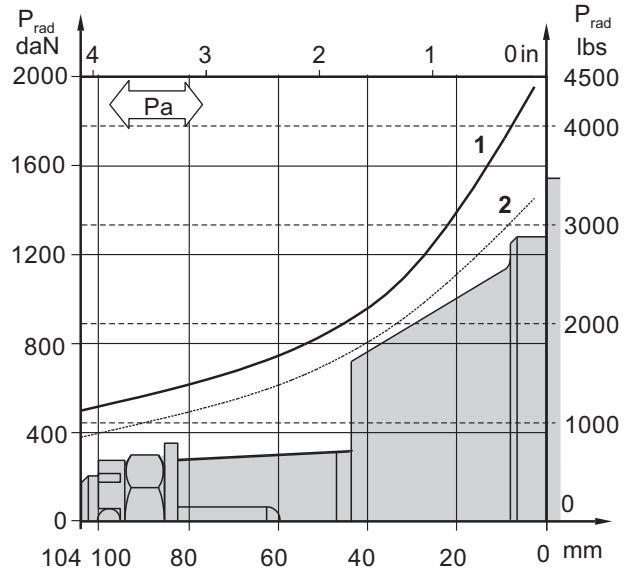
The curve applies to a B10 bearing life of 3000 hours at 200 RPM.

- 1: Pa < 350 daN [787 lbs]
- 2: Pa = 500 daN [1125 lbs]

**LBS(V).../289**



**LBS(V).../290**





**ORDER CODE for LB/288**

	1	2	3	4	5	6
<b>LB</b>		/288	-			

**Pos.1 - Output Face**

- A** - SAE A Mount
- B** - SAE B Mount

**Pos.2 - Input Shaft Holes** [see slots of page 5 left]

**C, G, S**

**Pos.3 - Static Torque Code** [see Specification Data]

7, 14, 21, 32, 43

**Pos.4 - Output Shaft Extensions\*** [see page 5]

- C** - 1"[25,4] straight, Parallel key
- G** - 1"[25,4] SAE 6B Splined
- S** - 7/8"[22,2] 13T Splined

**Pos.5 - Option [Paint]\*\***

- omit - no Paint
- P** - Painted
- PC** - Corrosion Protected Paint

**Pos.6 - Design Series**

- omit - Factory specified

Notes: \* For Max. Torque values see data on page 5.

The permissible output torque for shafts must not be exceeded!

\*\* Color at customer's request.

**ORDER CODE for LBS(LBV)/289 and 290**

	1	2	3	4	5	6	7
<b>LB</b>		/	-				

**Pos.1 - Type**

- S** - Disc Brake for short motor **S**- MLHSS
- V** - Disc Brake for very short motor **V**- MLHSV

**Pos.2 - Output Face**

- A** - SAE A Mount
- B** - SAE B Mount
- E** - Wheel Mount
- R** - Wheel Mount
- W** - SAE C Wheel Mount

**Pos.3 - Design Code**

- 289** - for MLHSS and MLHSV Motors
- 290** - for MLHSS and MLHSV Motors [Wheel Mounting Motors]

**Pos.4 - Static Torque Code** [see Specification Data]

21, 32, 43, 63

**Pos.5 - Output Shaft Extensions\*** [see page 10]

- C** - 1 1/4"[31,75] straight, Parallel key
- G** - 1 1/4"[31,75] 14T Splined
- S** - 1"[25,4] SAE 6B Splined
- T** - 1 1/4"[31,75] SAE J501 Tapered

**Pos.6 - Option [Paint]\*\***

- omit - no Paint
- P** - Painted
- PC** - Corrosion Protected Paint

**Pos.7 - Design Series**

- omit - Factory specified

Notes: \* For Max. Torque values see data on page 10. The permissible output torque for shafts must not be exceeded!

\*\* Color at customer's request.

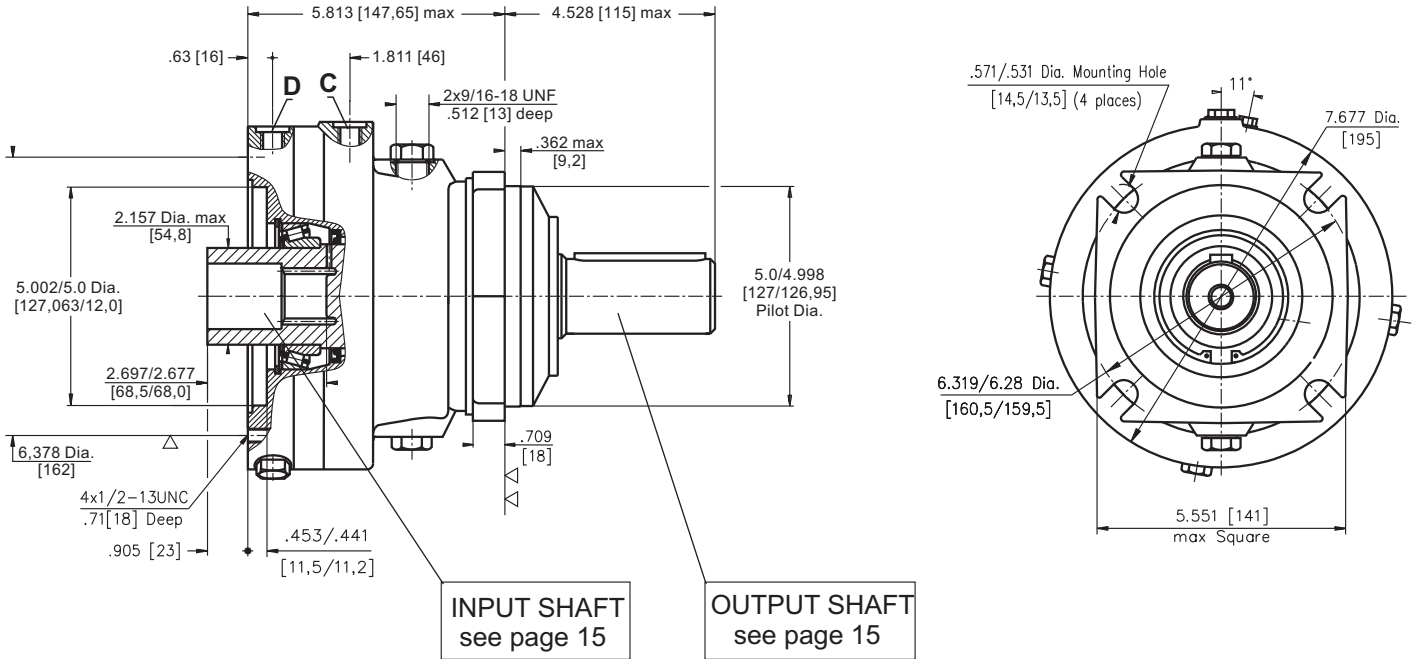
The Disc Brakes are mangano phosphatized as standard.

**ATTENTION:**

1. Hydraulic brake is delivered without oil (it is lubricated only).
2. Hydraulic brake is filled through the drain port **D**. Space is filled with 3.05 ÷ 7.32 in<sup>3</sup> [50 ÷ 120 cm<sup>3</sup>] mineral oil HLP (DIN 51524) or HM (ISO 6743/4). For LB/288 fill oil after hydraulic motor assembly.
3. In all brakes, friction discs and separators should be lubricated.

**HYDRAULIC DISC BRAKE TYPE LBS/314  
FOR FLANGE ATTACHMENT TO MLHTS HYDRAULIC MOTORS**

**C Square Mount**



**C:** Brake release Port - 7/16-20UNF, deep .47 [12]

**D:** Drainage tap - 9/16-18UNF, deep .51 [13]

▽ - Place for attachment

(tightening torque for screws 4x 1/2-13UNC, 1 1/4 in [31,8 mm] long ANSI B 18.3-76: 700<sup>+45</sup> lb-in [8<sup>+0,5</sup> daNm])

▽▽ - Place for attachment



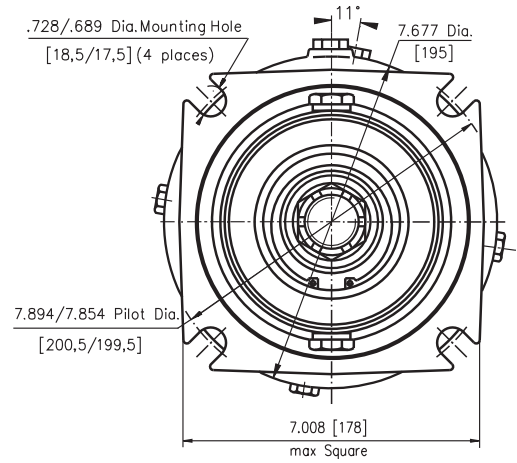
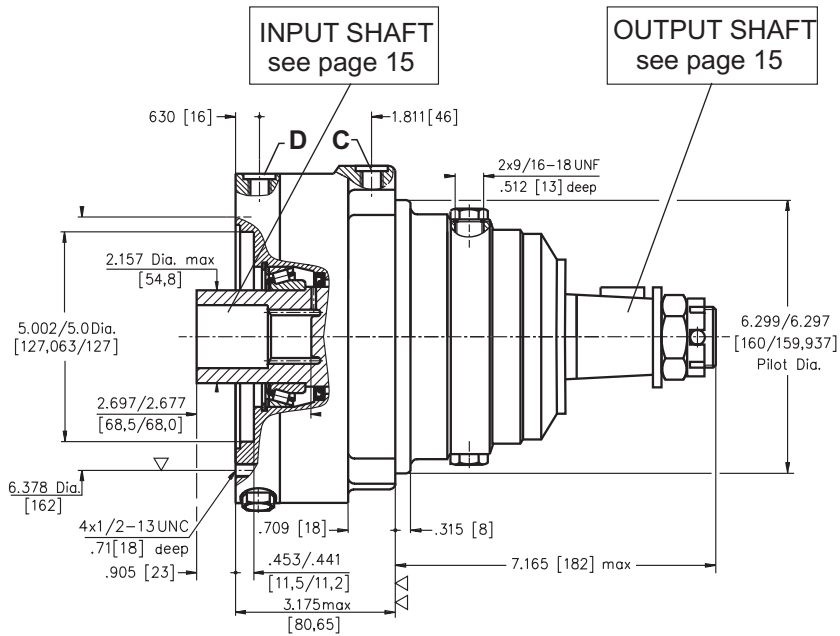
**SPECIFICATION DATA**

Description LBS/314(315) -... LBV/314(315)-...		21	29	43	65	85	110	130
*Min. Static Torque	lb-in [daNm]	1593-2036 [18-23]	2478-2921 [28-33]	3717-4071 [42-46]	5399-6196 [61-70]	7346-8143 [83-92]	9559-10444 [108-118]	11152-12037 [126-136]
Opening Pressure PSI [bar]	min	58-72 [4-5]	87-101 [6-7]	130-145 [9-10]	188-217 [13-15]	261-290 [18-20]	333-362 [23-25]	391-420 [27-29]
	max	4350 [300]						
Min. oil quantity for brake releasing	in <sup>3</sup> [cm <sup>3</sup> ]	.488 - .549 [8-9]						
Oil quantity	in <sup>3</sup> [cm <sup>3</sup> ]	9.15 - 18.3 [150-300]						
Max. Pressure in drain space	PSI [bar]	72 [5]						
Weight for .../314 for .../315	lb [kg]	52.9 [24] 55.1 [25]						

\*Static torque is obtained at working pressure - 0 PSI [0 bar].

**HYDRAULIC DISC BRAKE TYPE LBS/315**  
**FOR FLANGE ATTACHMENT TO MLHTS HYDRAULIC MOTORS**

**W** Wheel Mount



▽ - Place for attachment  
(tightening torque for screws 4x 1/2-13UNC, 1 1/4 in [31,8 mm] long ANSI B 18.3-76: 620 lb-in [7 daNm])

**C:** Brake release Port - 7/16-20UNF, deep .472 [12]  
**D:** Drainage tap - 9/16-18UNF, deep .512 [13]

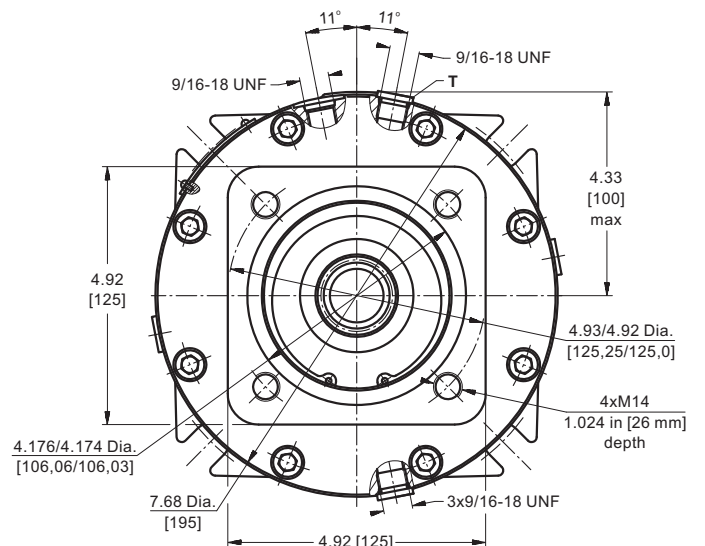
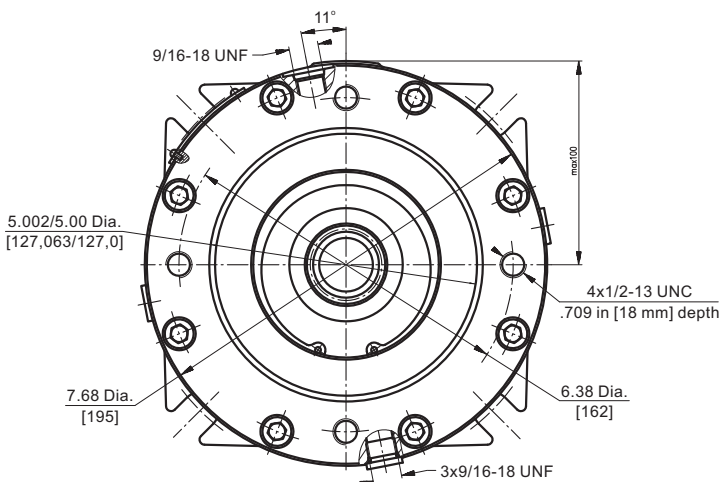
▽▽ - Place for attachment



**INPUT FACE**

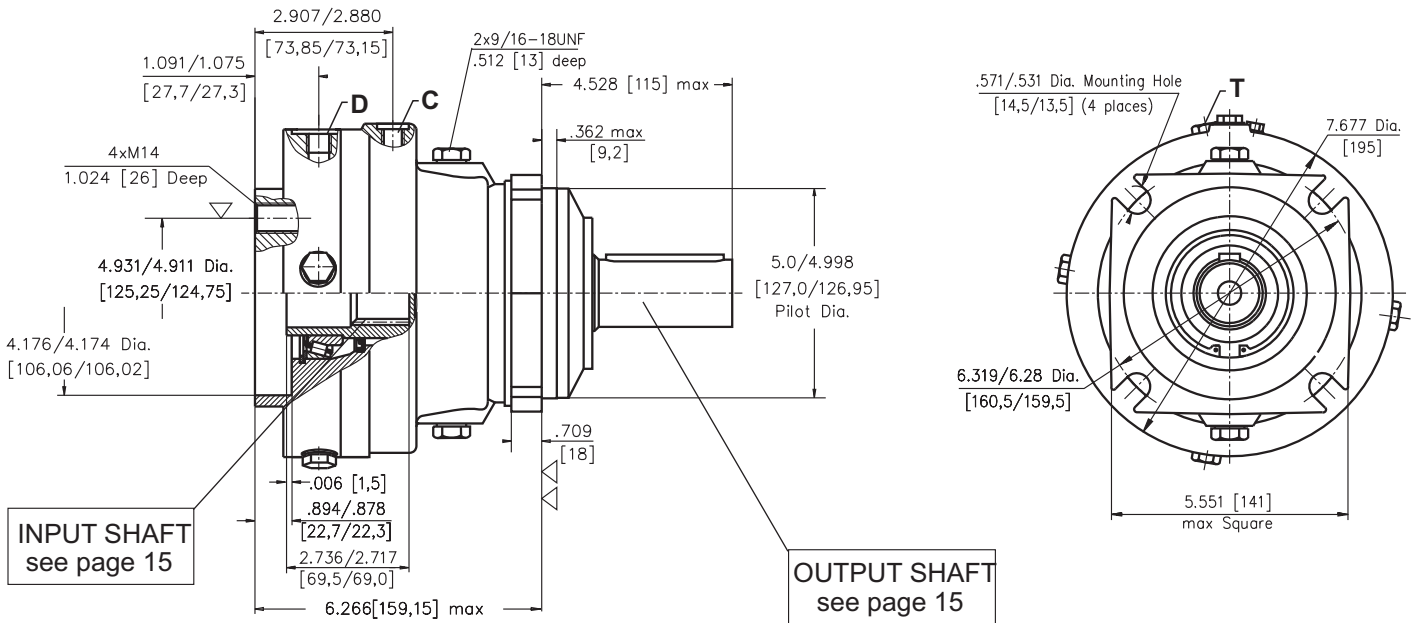
**TYPE**  
**LBS W/315-C**  
**LBS C/314-C**

**TYPE**  
**LBV W/315-C**  
**LBV C/314-C**



**HYDRAULIC DISC BRAKE TYPE LBV/314**  
**FOR FLANGE ATTACHMENT TO MLHTV HYDRAULIC MOTORS**

**C Square Mount**



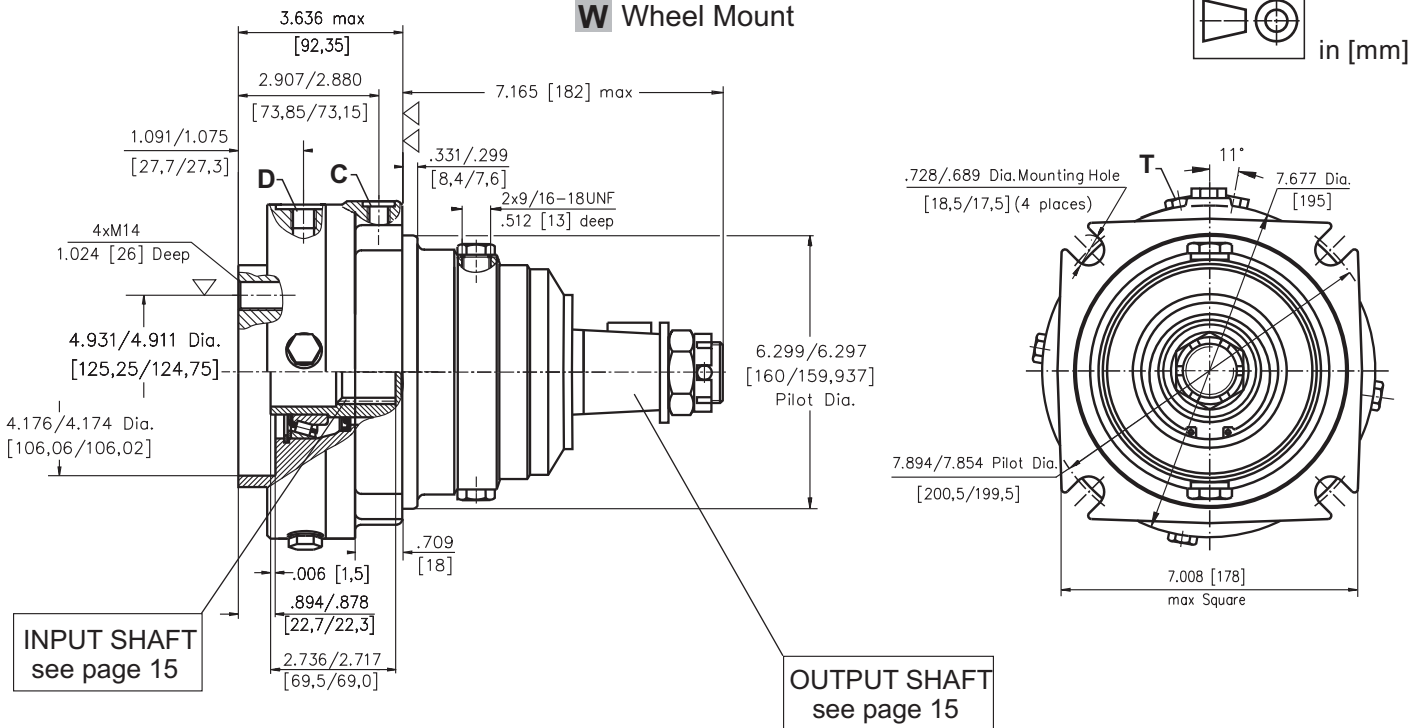
▽ - Place for attachment  
(tightening torque for screws 4xM14 DIN 912:  
885<sup>+90</sup> lb-in [10<sup>+1</sup> daNm])

▽▽ - Place for attachment

**C** : Brake release Port- 7/16 - 20UNF, .47 [12] depth  
**D** : Drain plug for the Brake - 9/16-18UNF, .51 [13] depth  
**T** : Drain plug for the Motor - 9/16-18UNF, .51 [13] depth

**HYDRAULIC DISC BRAKE TYPE LBV/315**  
**FOR FLANGE ATTACHMENT TO MLHTV HYDRAULIC MOTORS**

**W Wheel Mount**



▽ - Place for attachment  
(tightening torque for screws 4xM14 DIN 912:  
1020 in-lb [11,5 daNm])

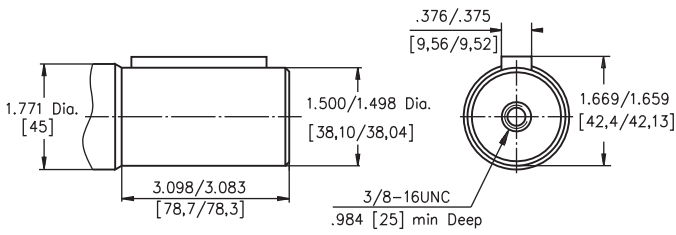
▽▽ - Place for attachment

**C** : Brake release Port- 7/16 - 20UNF, .47 [12] depth  
**D** : Drain plug for the Brake - 9/16-18UNF, .51 [13] depth  
**T** : Drain plug for the Motor - 9/16-18UNF, .51 [13] depth

**OUTPUT SHAFT EXTENSIONS for LB.../314, 315**

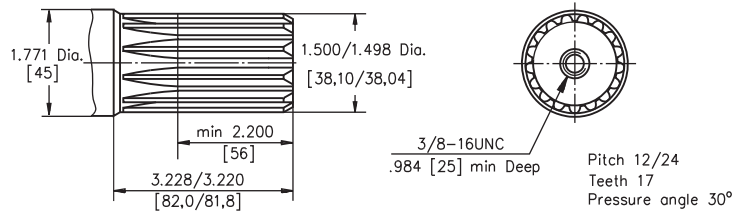
**C**

1½" [38,1] straight, Parallel key 3/8" x 3/8" x 2¼" BS46  
Max. Torque 11750 lb-in [133 daNm]



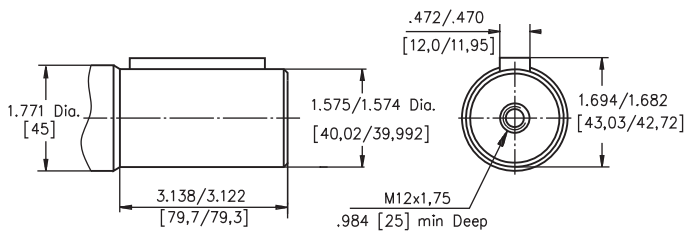
**G**

17T Splined, 1½" [38,1] ANS B92.1-1976  
Max. Torque 11750 lb-in [133 daNm]



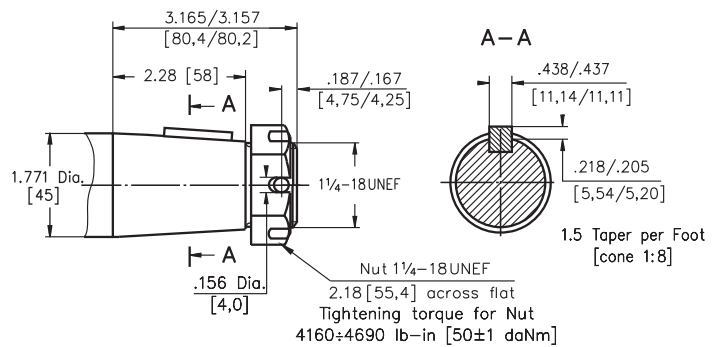
**M**

ø40 straight, Parallel key A12x8x70 DIN 6885  
Max. Torque 11750 lb-in [133 daNm]



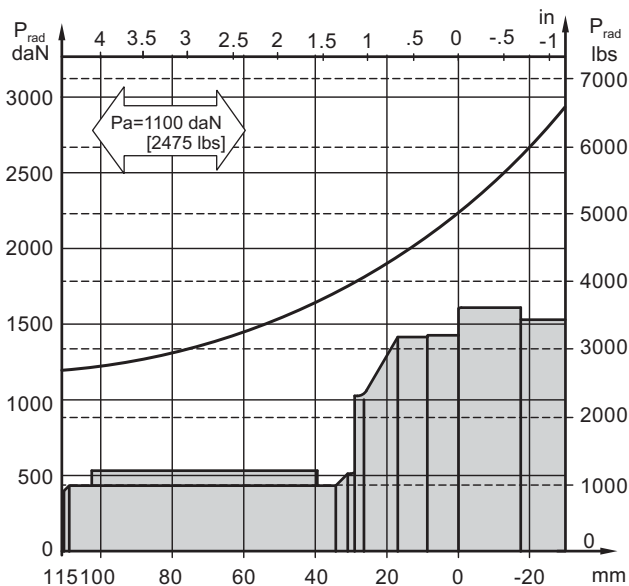
**T**

SAE J501 Tapered 1:8  
Parallel key 7/16" x 7/16" x 1¼" BS46  
Max. Torque 18650 lb-in [210 daNm]

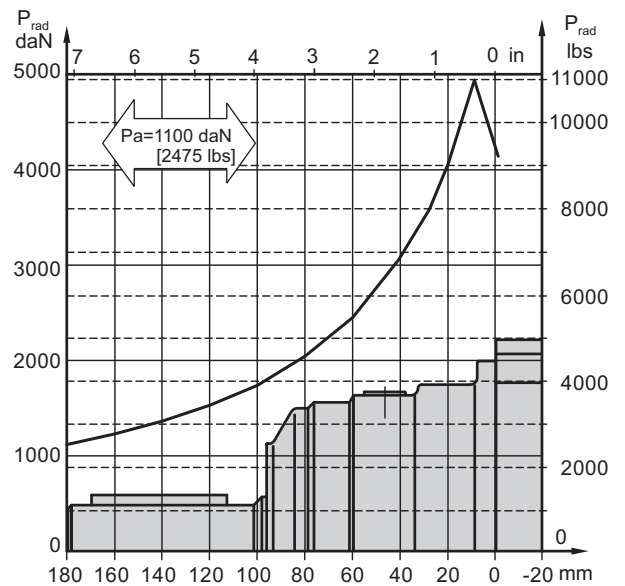


**LOAD CURVE**

**Version LB... /314**



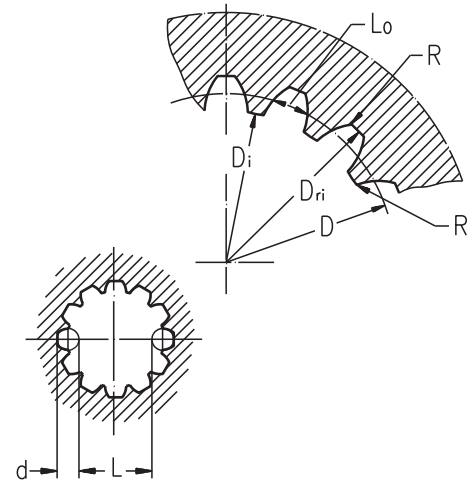
**Version LB... /315**



**INTERNAL SPLINE DATA FOR THE ATTACHED COMPONENT**

Standard ANS B92.1-1970, class 5  
[ $m=2.1166$ ]

Fillet Root Side Fit	LBS(V)/289 LBS(V)/290		LBS(V)/314 LBS(V)/315		
	inch	mm	inch	mm	
Number of Teeth	z	12	12	16	16
Diametral Pitch	DP	12/24	12/24	12/24	12/24
Pressure Angle		30°	30°	30°	30°
Pitch Dia.	D	1	25,4	1.3333	33,8656
Major Dia.	Dri	1.1 ± 1.098	28,0 <sup>-0,1</sup>	1.5275±1.5118	38,4 <sup>+0,4</sup>
Minor Dia.	Di	.9068 ± .9055	23,0 <sup>+0,033</sup>	1.2673±1.2657	32,15 <sup>+0,06</sup>
Space Width [Circular]Lo		.1704 ± .1688	4,308±0,020	.1763±.1792	4,516±0,037
Fillet Radius	R	.008	0,2	.02	0,5
Max. Measurement between Pins	L	.699 ± .694	17,62 <sup>+0,15</sup>	1.063±1.059	26,9 <sup>+0,10</sup>
Pin Dia.	d	.19039±.19031	4,835±0,001	.19026±.19034	4,835±0,001
Corrected	x.m	+0,31	+0,8	+0,39	+1,0



**ORDER CODE for LBS(LBV)/314 and 315**



**Pos.1 - Type**

- S** - Disc Brake for short motor **S** - MLHTS
- V** - Disc Brake for very short motor **V** - MLHTV

**Pos.2 - Output Face**

- C** - Square Mount [for LBS(LBV)/314 only]
- W** - Wheel Mount [for LBS(LBV)/315 only]

**Pos.3 - Design Code**

- 314** - for MLHTS and MLHTV Motors
- 315** - for MLHTS and MLHTV Motors [Wheel Mounting Motors]

**Pos.4 - Static Torque Code [see Specification Data]**

21, 29, 43, 65, 85, 110, 130

**Pos.5 - Output Shaft Extensions\***

- C** - 1½" [38,10] straight, Parallel key
- G** - 1½" [38,10] 17T Splined
- M** - 40 mm straight, Parallel key
- T** - 1¾"[44,50] SAE J501 Tapered

**Pos.6 - Option [Paint]\*\***

- omit - no Paint
- P** - Painted
- PC** - Corrosion Protected Paint

**Pos.7 - Design Series**

- omit - Factory specified

**Notes:** \* For Max. Torque values see data on page 15. The permissible output torque for shafts must not be exceeded!  
\*\* Color at customer's request.

The Disc Brakes are mangano phosphatized as standard.

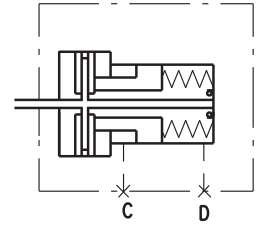
**ATTENTION:**

1. Hydraulic brake is delivered without oil (it is lubricated only).
2. Hydraulic brake is filled through the drain port **D**. Space is filled with 9.15 ÷ 18.3 in<sup>3</sup> [150 ÷ 300 cm<sup>3</sup>] mineral oil HLP (DIN 51524) or HM (ISO 6743/4).
3. In all brakes, friction discs and separators should be lubricated.

# HYDRAULIC DISC BRAKES B...R- Wet

B...R brake is designed to be mounted to the wheels of low-speed agricultural and construction vehicles.

The advantage of these brakes is that despite the smallest possible dimensions they preserve long-term life of the bearings at high radial shaft load.



## SPECIFICATION DATA

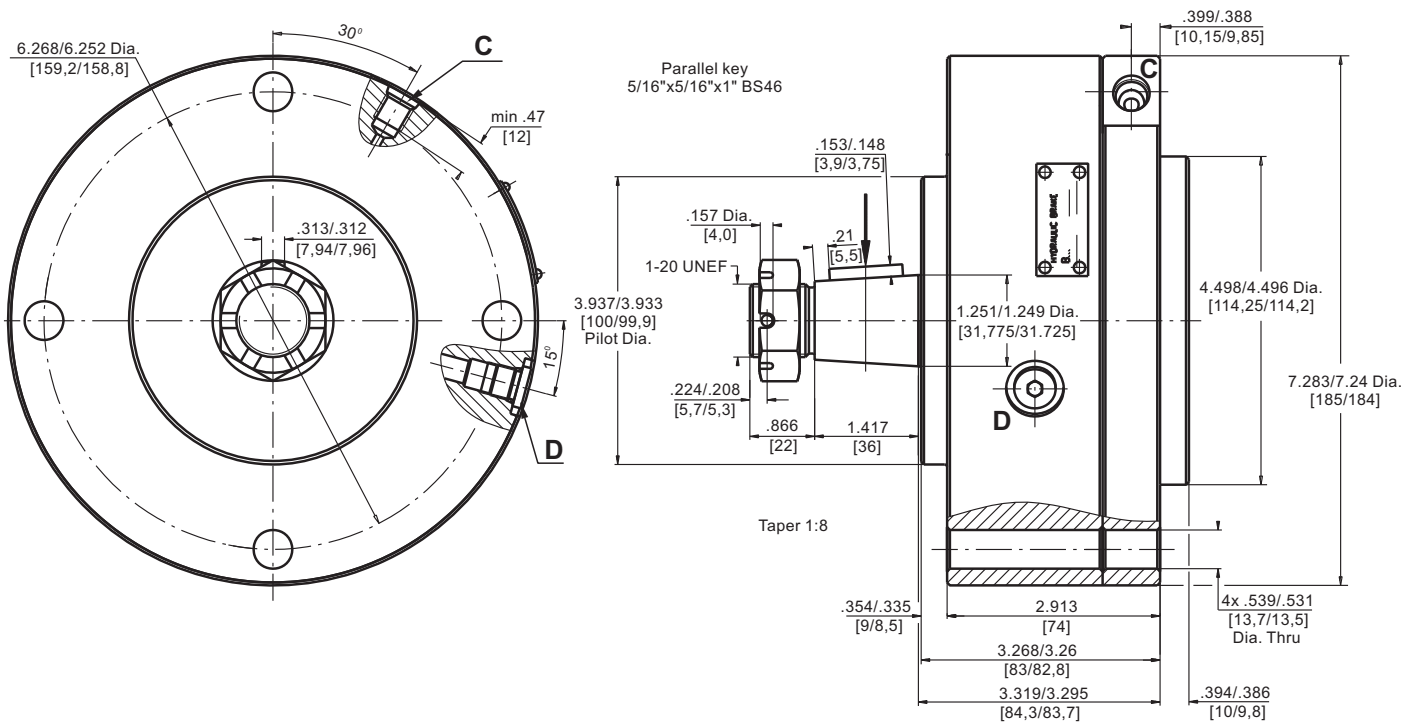
Type	B35R	B55R
Static Torque of Brake, lb-in [daNm]*	3100 [35]	4870 [55]
Initial Release Pressure, PSI [bar]	232 [16]	232 [16]
Full Release Pressure, PSI [bar]	275 [19]	275 [19]
Max. Operating Pressure, PSI [bar]	3480 [240]	3480 [240]
Max. Speed, RPM	90	90
Cont. Radial Shaft Load lbs [daN]**	1125 [500]	1125 [500]
Max. Radial Shaft Load lbs [daN]***	1575 [700]	2030 [900]

\* At 0 PSI [0 bar] back pressure

\*\* At radial shaft load of 1125 lbs [500 daN], applied at center-line of the key and speed of rotation 90 RPM, the bearing life is 1000 hours.

\*\*\* The permissible values of radial shaft load may occur for max. 10% of every minute

## DIMENSIONS AND MOUNTING DATA



C : Brake Release Port -7/16-20 UNF  
SAE J1926-1/ISO 11926-1

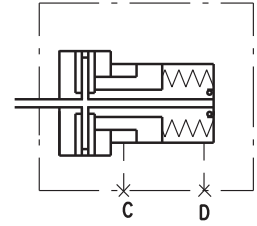
D : Drainage Tap - 7/16-20 UNF



# HYDRAULIC DISC BRAKES B...T- Wet

B..T brake is designed to be mounted to the wheels of low-speed agricultural and construction vehicles.

The advantage of these brakes is that despite the smallest possible dimensions they preserve long-term life of the bearings at high radial shaft load.



## SPECIFICATION DATA

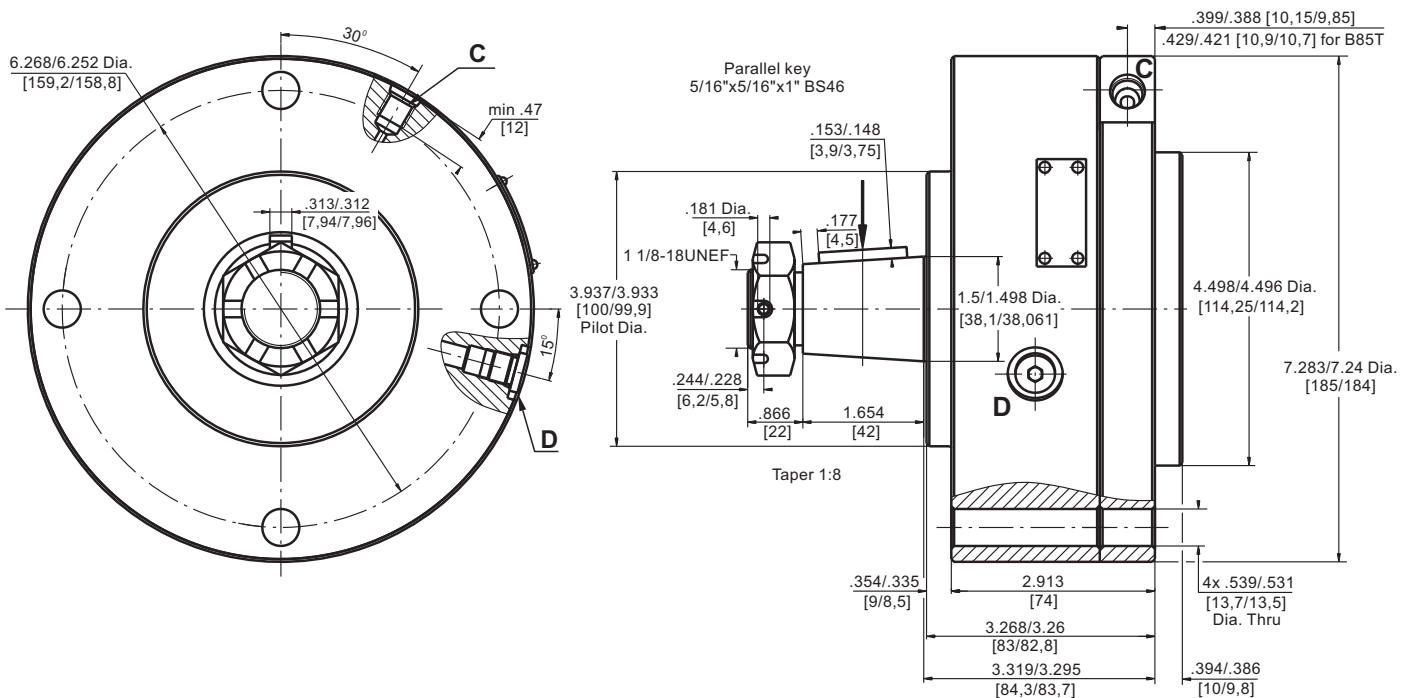
Type	B50T	B55T	B60T	B65T	B85T
Static Torque of Brake, lb-in [daNm]*	4425 [50]	4870 [55]	5310 [60]	5750 [65]	7525 [85]
Initial Release Pressure, PSI [bar]	232 [16]	232 [16]	232 [16]	246 [17]	260 [18]
Full Release Pressure, PSI [bar]	275 [19]	275 [19]	275 [19]	290 [20]	320 [22]
Max. Operating Pressure, PSI [bar]	3480 [240]	3480 [240]	3480 [240]	3480 [240]	3480 [240]
Max. Speed, RPM	60	60	60	60	60
Cont. Radial Shaft Load lbs [daN]**	2250 [1000]	2250 [1000]	2250 [1000]	2250 [1000]	2250 [1000]
Max. Radial Shaft Load lbs [daN]***	4830 [2150]	4830 [2150]	4830 [2150]	4830 [2150]	4830 [2150]

\* At 0 PSI [0 bar] back pressure

\*\* At radial shaft load of 2250 lbs [1000 daN], applied at center-line of the key and speed of rotation 60 RPM, the bearing life is 1000 hours.

\*\*\* The permissible values of radial shaft load may occur for max. 10% of every minute

## DIMENSIONS AND MOUNTING DATA



C : Brake Release Port -7/16-20 UNF  
SAE J1926-1/ISO 11926-1

D : Drainage Tap - 7/16-20 UNF

